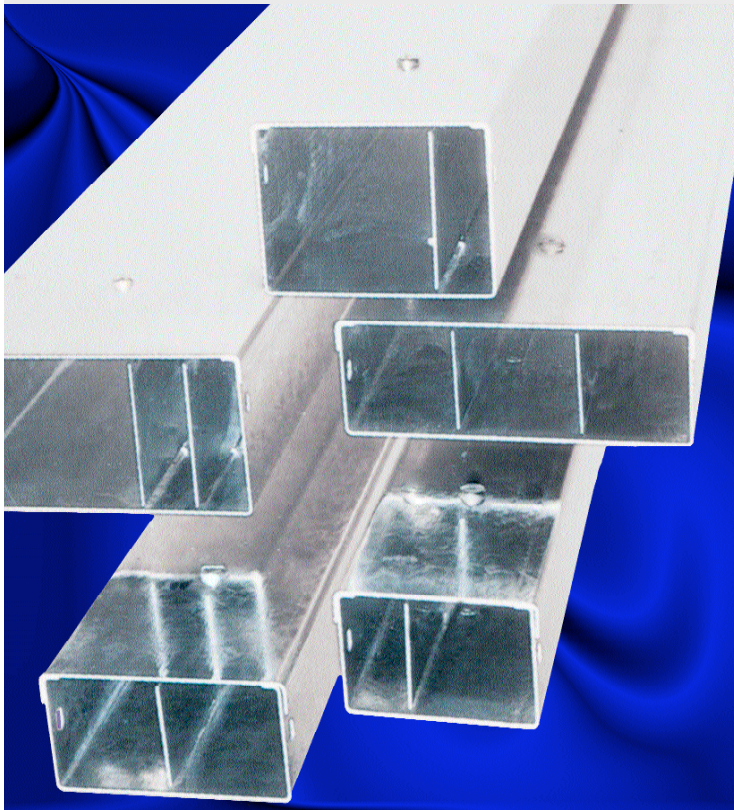


INTRODUCTION

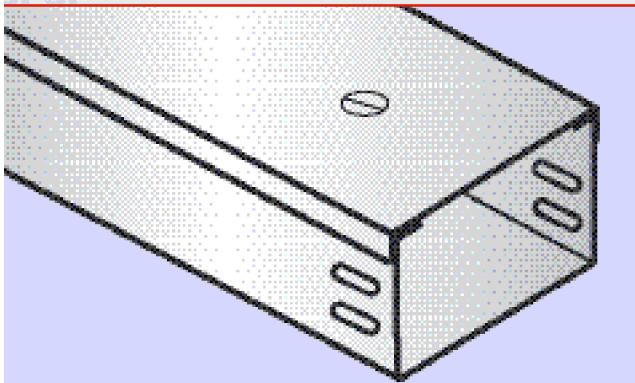


SFSP manufactures a full range of Uni-Metal Cable Trunkings: Single and multi compartments with accessories according to the highest standards of fabrication. All these products are available with various finishes applied in our factories to your demands. Uni-Metal Trunkings are available within variable thicknesses from 0.9 mm to 2 mm according to the specific project's specifications and as per customers' requests. Several types of trunkings and fittings with accessories are presented in our catalogue. For additional information on installation, system design or fitting not shown in this publication, SFSP's technical personnel are available to provide all assistance possible.

INDEX

• INTRODUCTION	1
• TRUNKING RUNS	
- Single Compartment Trunking	2
• TRUNKING FITTINGS	
- Bend 45°	3
- Bend 90°	4
- Tee Bend	6
- Intersection	7
• TRUNKING RUNS	
- Double Compartment Trunking	8
- Triple Compartment Trunking	9
• TRUNKING ACCESSORIES	10
• GENERAL INFORMATION	11
• STANDARDS & FINISHES	12

SINGLE COMPARTMENT TRUNKINGS



Single compartment return edge cable trunking is manufactured in compliance with BS4678 Part 1 1988 Class 3 and comes with all standard trunking couplings and lids that quickly lock into place. Trunkings' lengths available are:

- 2440 mm
- 3000 mm

Single Compartment Cable Trunking 0.9 mm Thickness

SCT - 4200

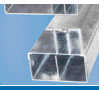
Reference	Dimensions	
	MM	Inch
SCT 4200 050 0050 2	50 x 50 mm	(2" x 2")
SCT 4200 075 0050 2	75 x 50 mm	(3" x 2")
SCT 4200 075 0075 2	75 x 75 mm	(3" x 3")
SCT 4200 100 0050 2	100 x 50 mm	(4" x 2")
SCT 4200 100 0075 2	100 x 75 mm	(4" x 3")
SCT 4200 100 0100 2	100 x 100 mm	(4" x 4")
SCT 4200 150 0050 2	150 x 50 mm	(6" x 2")
SCT 4200 150 0075 2	150 x 75 mm	(6" x 3")
SCT 4200 150 0100 2	150 x 100 mm	(6" x 4")
SCT 4200 150 0150 2	150 x 150 mm	(6" x 6")

Single Compartment Cable Trunking 1.2 mm Thickness

SCT - 4300

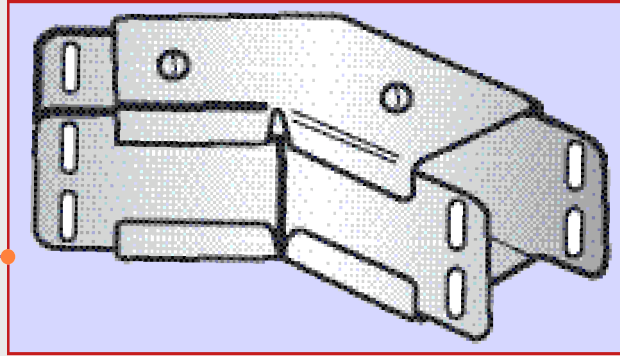
Reference	Dimensions	
	MM	Inch
SCT 4300 050 0050 3	50 x 50 mm	(2" x 2")
SCT 4300 075 0050 3	75 x 50 mm	(3" x 2")
SCT 4300 075 0075 3	75 x 75 mm	(3" x 3")
SCT 4300 100 0050 3	100 x 50 mm	(4" x 2")
SCT 4300 100 0075 3	100 x 75 mm	(4" x 3")
SCT 4300 100 0100 3	100 x 100 mm	(4" x 4")
SCT 4300 150 0050 3	150 x 50 mm	(6" x 2")
SCT 4300 150 0075 3	150 x 75 mm	(6" x 3")
SCT 4300 150 0100 3	150 x 100 mm	(6" x 4")
SCT 4300 150 0150 3	150 x 150 mm	(6" x 6")

• Other thicknesses are available upon request



FITTINGS

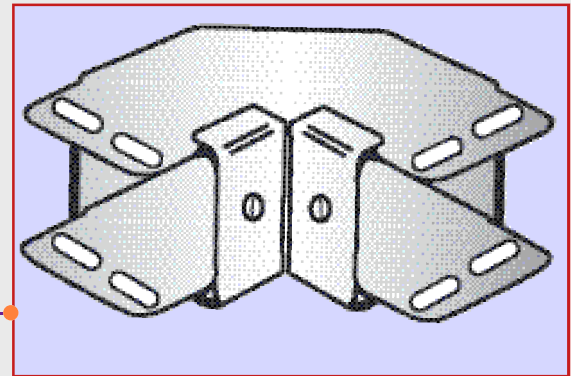
TOP LID 45° Bend
Thickness: 0.9 mm - 1.2 mm



TL45 7110 - 7115

Reference		Dimensions	
0.9 mm	1.2 mm	MM	Inch
TL45 7110 050 0050 2	TL45 7115 050 0050 3	50 x 50 mm	(2" x 2")
TL45 7110 075 0050 2	TL45 7115 075 0050 3	75 x 50 mm	(3" x 2")
TL45 7110 075 0075 2	TL45 7115 075 0075 3	75 x 75 mm	(3" x 3")
TL45 7110 100 0050 2	TL45 7115 100 0050 3	100 x 50 mm	(4" x 2")
TL45 7110 100 0075 2	TL45 7115 100 0075 3	100 x 75 mm	(4" x 3")
TL45 7110 100 0100 2	TL45 7115 100 0100 3	100 x 100 mm	(4" x 4")
TL45 7110 150 0050 2	TL45 7115 150 0050 3	150 x 50 mm	(6" x 2")
TL45 7110 150 0075 2	TL45 7115 150 0075 3	150 x 75 mm	(6" x 3")
TL45 7110 150 0100 2	TL45 7115 150 0100 3	150 x 100 mm	(6" x 4")
TL45 7110 150 0150 2	TL45 7115 150 0150 3	150 x 150 mm	(6" x 6")

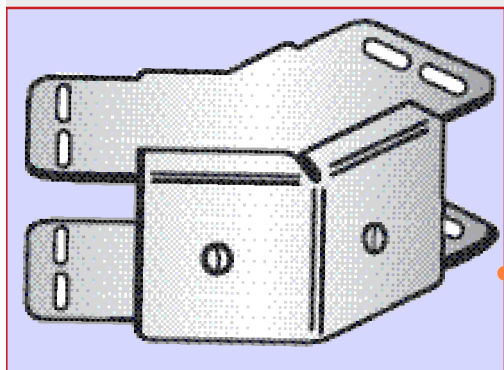
INSIDE LID 45° Bend
Thickness: 0.9 mm - 1.2 mm



IL45 7210 - 7215

Reference		Dimensions	
0.9 mm	1.2 mm	MM	Inch
IL45 7210 050 0050 2	IL45 7215 050 0050 3	50 x 50 mm	(2" x 2")
IL45 7210 075 0050 2	IL45 7215 075 0050 3	75 x 50 mm	(3" x 2")
IL45 7210 075 0075 2	IL45 7215 075 0075 3	75 x 75 mm	(3" x 3")
IL45 7210 100 0050 2	IL45 7215 100 0050 3	100 x 50 mm	(4" x 2")
IL45 7210 100 0075 2	IL45 7215 100 0075 3	100 x 75 mm	(4" x 3")
IL45 7210 100 0100 2	IL45 7215 100 0100 3	100 x 100 mm	(4" x 4")
IL45 7210 150 0050 2	IL45 7215 150 0050 3	150 x 50 mm	(6" x 2")
IL45 7210 150 0075 2	IL45 7215 150 0075 3	150 x 75 mm	(6" x 3")
IL45 7210 150 0100 2	IL45 7215 150 0100 3	150 x 100 mm	(6" x 4")
IL45 7210 150 0150 2	IL45 7215 150 0150 3	150 x 150 mm	(6" x 6")

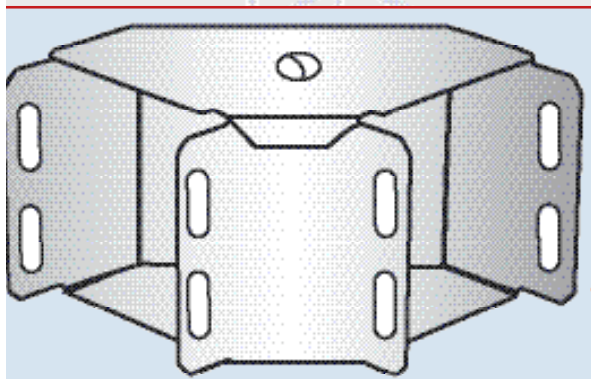
TRUNKING FITTINGS



OUTSIDE LID 45° Bend
Thickness: 0.9 mm - 1.2 mm

OL45 7310 - 7315

Reference		Dimensions	
0.9 mm	1.2 mm	MM	Inch
OL45 7310 050 0050 2	OL45 7315 050 0050 3	50 x 50 mm	(2" x 2")
OL45 7310 075 0050 2	OL45 7315 075 0050 3	75 x 50 mm	(3" x 2")
OL45 7310 075 0075 2	OL45 7315 075 0075 3	75 x 75 mm	(3" x 3")
OL45 7310 100 0050 2	OL45 7315 100 0050 3	100 x 50 mm	(4" x 2")
OL45 7310 100 0075 2	OL45 7315 100 0075 3	100 x 75 mm	(4" x 3")
OL45 7310 100 0100 2	OL45 7315 100 0100 3	100 x 100 mm	(4" x 4")
OL45 7310 150 0050 2	OL45 7315 150 0050 3	150 x 50 mm	(6" x 2")
OL45 7310 150 0075 2	OL45 7315 150 0075 3	150 x 75 mm	(6" x 3")
OL45 7310 150 0100 2	OL45 7315 150 0100 3	150 x 100 mm	(6" x 4")
OL45 7310 150 0150 2	OL45 7315 150 0150 3	150 x 150 mm	(6" x 6")



TOP LID Bend 90°
Thickness: 0.9 mm - 1.2 mm

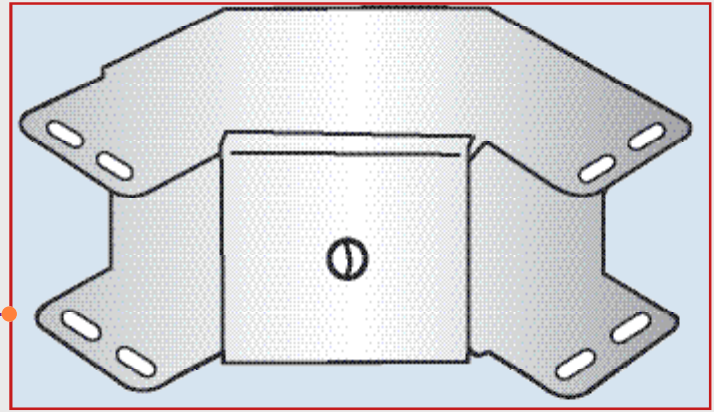
TL90 7410 - 7415

Reference		Dimensions	
0.9 mm	1.2 mm	MM	Inch
TL90 7410 050 0050 2	TL90 7415 050 0050 3	50 x 50 mm	(2" x 2")
TL90 7410 075 0050 2	TL90 7415 075 0050 3	75 x 50 mm	(3" x 2")
TL90 7410 075 0075 2	TL90 7415 075 0075 3	75 x 75 mm	(3" x 3")
TL90 7410 100 0050 2	TL90 7415 100 0050 3	100 x 50 mm	(4" x 2")
TL90 7410 100 0075 2	TL90 7415 100 0075 3	100 x 75 mm	(4" x 3")
TL90 7410 100 0100 2	TL90 7415 100 0100 3	100 x 100 mm	(4" x 4")
TL90 7410 150 0050 2	TL90 7415 150 0050 3	150 x 50 mm	(6" x 2")
TL90 7410 150 0075 2	TL90 7415 150 0075 3	150 x 75 mm	(6" x 3")
TL90 7410 150 0100 2	TL90 7415 150 0100 3	150 x 100 mm	(6" x 4")
TL90 7410 150 0150 2	TL90 7415 150 0150 3	150 x 150 mm	(6" x 6")



INSIDE LID Bend 90°
Thickness: 0.9 mm - 1.2 mm

IL90 7510 - 7515

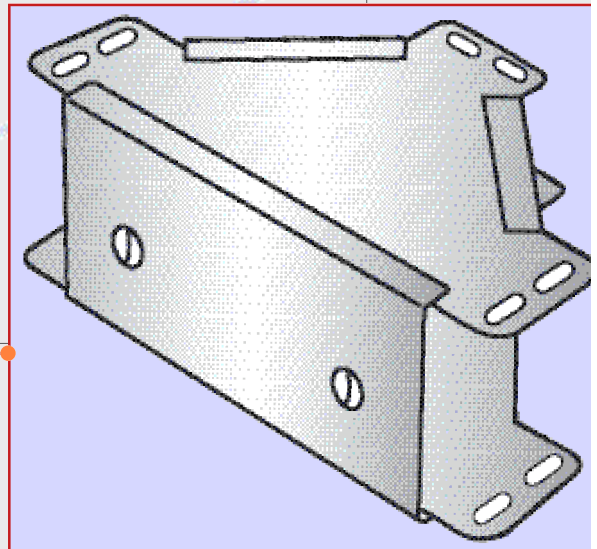


Reference		Dimensions	
0.9 mm	1.2 mm	MM	Inch
IL90 7510 050 0050 2	IL90 7515 050 0050 3	50 x 50 mm	(2" x 2")
IL90 7510 075 0050 2	IL90 7515 075 0050 3	75 x 50 mm	(3" x 2")
IL90 7510 075 0075 2	IL90 7515 075 0075 3	75 x 75 mm	(3" x 3")
IL90 7510 100 0050 2	IL90 7515 100 0050 3	100 x 50 mm	(4" x 2")
IL90 7510 100 0075 2	IL90 7515 100 0075 3	100 x 75 mm	(4" x 3")
IL90 7510 100 0100 2	IL90 7515 100 0100 3	100 x 100 mm	(4" x 4")
IL90 7510 150 0050 2	IL90 7515 150 0050 3	150 x 50 mm	(6" x 2")
IL90 7510 150 0075 2	IL90 7515 150 0075 3	150 x 75 mm	(6" x 3")
IL90 7510 150 0100 2	IL90 7515 150 0100 3	150 x 100 mm	(6" x 4")
IL90 7510 150 0150 2	IL90 7515 150 0150 3	150 x 150 mm	(6" x 6")

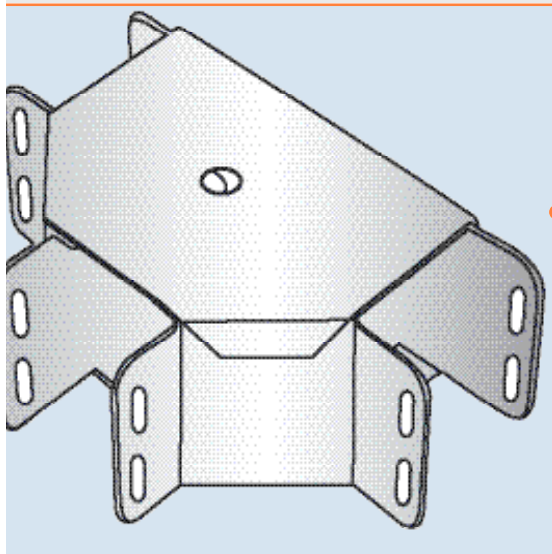
OUTSIDE LID Bend 90°
Thickness: 0.9 mm - 1.2 mm

OL90 7610 - 7615

Reference		Dimensions	
0.9 mm	1.2 mm	MM	Inch
OL90 7610 050 0050 2	OL90 7615 050 0050 3	50 x 50 mm	(2" x 2")
OL90 7610 075 0050 2	OL90 7615 075 0050 3	75 x 50 mm	(3" x 2")
OL90 7610 075 0075 2	OL90 7615 075 0075 3	75 x 75 mm	(3" x 3")
OL90 7610 100 0050 2	OL90 7615 100 0050 3	100 x 50 mm	(4" x 2")
OL90 7610 100 0075 2	OL90 7615 100 0075 3	100 x 75 mm	(4" x 3")
OL90 7610 100 0100 2	OL90 7615 100 0100 3	100 x 100 mm	(4" x 4")
OL90 7610 150 0050 2	OL90 7615 150 0050 3	150 x 50 mm	(6" x 2")
OL90 7610 150 0075 2	OL90 7615 150 0075 3	150 x 75 mm	(6" x 3")
OL90 7610 150 0100 2	OL90 7615 150 0100 3	150 x 100 mm	(6" x 4")
OL90 7610 150 0150 2	OL90 7615 150 0150 3	150 x 150 mm	(6" x 6")



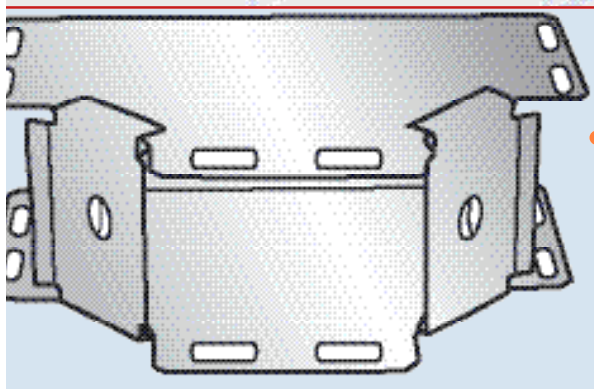
TRUNKING FITTINGS



TEE BEND TOP LID
Thickness: 0.9 mm - 1.2 mm

TBTL 7710 - 7715

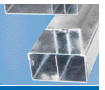
Reference		Dimensions	
0.9 mm	1.2 mm	MM	Inch
TBTL 7710 050 0050 2	TBTL 7715 050 0050 3	50 x 50 mm	(2" x 2")
TBTL 7710 075 0050 2	TBTL 7715 075 0050 3	75 x 50 mm	(3" x 2")
TBTL 7710 075 0075 2	TBTL 7715 075 0075 3	75 x 75 mm	(3" x 3")
TBTL 7710 100 0050 2	TBTL 7715 100 0050 3	100 x 50 mm	(4" x 2")
TBTL 7710 100 0075 2	TBTL 7715 100 0075 3	100 x 75 mm	(4" x 3")
TBTL 7710 100 0100 2	TBTL 7715 100 0100 3	100 x 100 mm	(4" x 4")
TBTL 7710 150 0050 2	TBTL 7715 150 0050 3	150 x 50 mm	(6" x 2")
TBTL 7710 150 0075 2	TBTL 7715 150 0075 3	150 x 75 mm	(6" x 3")
TBTL 7710 150 0100 2	TBTL 7715 150 0100 3	150 x 100 mm	(6" x 4")
TBTL 7710 150 0150 2	TBTL 7715 150 0150 3	150 x 150 mm	(6" x 6")



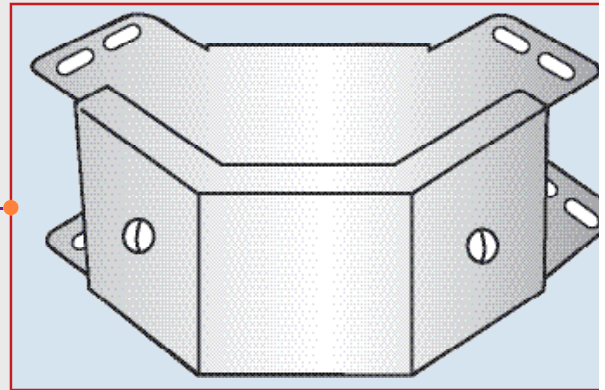
TEE BEND INSIDE LID
Thickness: 0.9 mm - 1.2 mm

TBIL 7810 - 7815

Reference		Dimensions	
0.9 mm	1.2 mm	MM	Inch
TBIL 7810 050 0050 2	TBIL 7815 050 0050 3	50 x 50 mm	(2" x 2")
TBIL 7810 075 0050 2	TBIL 7815 075 0050 3	75 x 50 mm	(3" x 2")
TBIL 7810 075 0075 2	TBIL 7815 075 0075 3	75 x 75 mm	(3" x 3")
TBIL 7810 100 0050 2	TBIL 7815 100 0050 3	100 x 50 mm	(4" x 2")
TBIL 7810 100 0075 2	TBIL 7815 100 0075 3	100 x 75 mm	(4" x 3")
TBIL 7810 100 0100 2	TBIL 7815 100 0100 3	100 x 100 mm	(4" x 4")
TBIL 7810 150 0050 2	TBIL 7815 150 0050 3	150 x 50 mm	(6" x 2")
TBIL 7810 150 0075 2	TBIL 7815 150 0075 3	150 x 75 mm	(6" x 3")
TBIL 7810 150 0100 2	TBIL 7815 150 0100 3	150 x 100 mm	(6" x 4")
TBIL 7810 150 0150 2	TBIL 7815 150 0150 3	150 x 150 mm	(6" x 6")



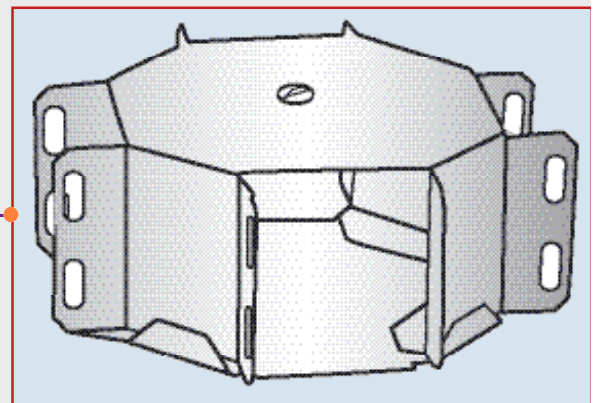
TEE BEND OUTSIDE LID
Thickness: 0.9 mm - 1.2 mm



TBOL 7910 - 7915

Reference		Dimensions	
0.9 mm	1.2 mm	MM	Inch
TBOL 7910 050 0050 2	TBOL 7915 050 0050 3	50 x 50 mm	(2" x 2")
TBOL 7910 075 0050 2	TBOL 7915 075 0050 3	75 x 50 mm	(3" x 2")
TBOL 7910 075 0075 2	TBOL 7915 075 0075 3	75 x 75 mm	(3" x 3")
TBOL 7910 100 0050 2	TBOL 7915 100 0050 3	100 x 50 mm	(4" x 2")
TBOL 7910 100 0075 2	TBOL 7915 100 0075 3	100 x 75 mm	(4" x 3")
TBOL 7910 100 0100 2	TBOL 7915 100 0100 3	100 x 100 mm	(4" x 4")
TBOL 7910 150 0050 2	TBOL 7915 150 0050 3	150 x 50 mm	(6" x 2")
TBOL 7910 150 0075 2	TBOL 7915 150 0075 3	150 x 75 mm	(6" x 3")
TBOL 7910 150 0100 2	TBOL 7915 150 0100 3	150 x 100 mm	(6" x 4")
TBOL 7910 150 0150 2	TBOL 7915 150 0150 3	150 x 150 mm	(6" x 6")

INTERSECTION
Thickness: 0.9 mm - 1.2 mm



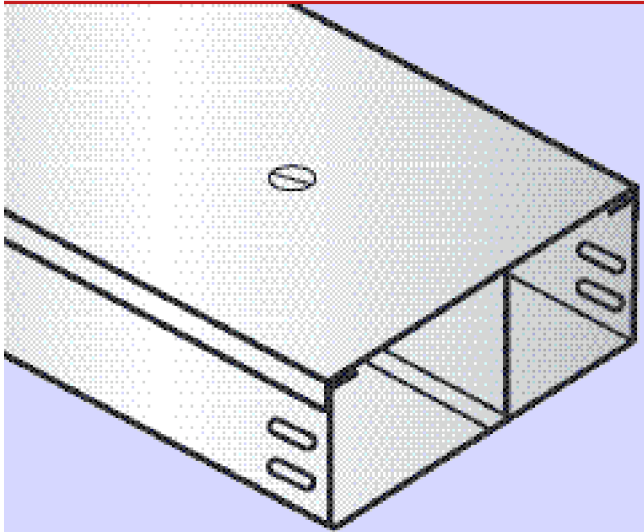
IF 8010 - 8015

Reference		Dimensions	
0.9 mm	1.2 mm	MM	Inch
IF 8010 050 0050 2	IF 8015 050 0050 3	50 x 50 mm	(2" x 2")
IF 8010 075 0050 2	IF 8015 075 0050 3	75 x 50 mm	(3" x 2")
IF 8010 075 0075 2	IF 8015 075 0075 3	75 x 75 mm	(3" x 3")
IF 8010 100 0050 2	IF 8015 100 0050 3	100 x 50 mm	(4" x 2")
IF 8010 100 0075 2	IF 8015 100 0075 3	100 x 75 mm	(4" x 3")
IF 8010 100 0100 2	IF 8015 100 0100 3	100 x 100 mm	(4" x 4")
IF 8010 150 0050 2	IF 8015 150 0050 3	150 x 50 mm	(6" x 2")
IF 8010 150 0075 2	IF 8015 150 0075 3	150 x 75 mm	(6" x 3")
IF 8010 150 0100 2	IF 8015 150 0100 3	150 x 100 mm	(6" x 4")
IF 8010 150 0150 2	IF 8015 150 0150 3	150 x 150 mm	(6" x 6")

MULTI COMPARTMENT TRUNKINGS



DOUBLE COMPARTMENT TRUNKINGS



Double Compartment Cable Trunking
0.9 mm Thickness

DCT - 5200

Reference	Dimensions	
	MM	Inch
DCT 5200 050 0050 2	50 x 50 mm	(2" x 2")
DCT 5200 075 0050 2	75 x 50 mm	(3" x 2")
DCT 5200 075 0075 2	75 x 75 mm	(3" x 3")
DCT 5200 100 0050 2	100 x 50 mm	(4" x 2")
DCT 5200 100 0075 2	100 x 75 mm	(4" x 3")
DCT 5200 100 0100 2	100 x 100 mm	(4" x 4")
DCT 5200 150 0050 2	150 x 50 mm	(6" x 2")
DCT 5200 150 0075 2	150 x 75 mm	(6" x 3")
DCT 5200 150 0100 2	150 x 100 mm	(6" x 4")
DCT 5200 150 0150 2	150 x 150 mm	(6" x 6")

Double Compartment Cable Trunking
1.2 mm Thickness

DCT - 5300

Reference	Dimensions	
	MM	Inch
DCT 5300 050 0050 3	50 x 50 mm	(2" x 2")
DCT 5300 075 0050 3	75 x 50 mm	(3" x 2")
DCT 5300 075 0075 3	75 x 75 mm	(3" x 3")
DCT 5300 100 0050 3	100 x 50 mm	(4" x 2")
DCT 5300 100 0075 3	100 x 75 mm	(4" x 3")
DCT 5300 100 0100 3	100 x 100 mm	(4" x 4")
DCT 5300 150 0050 3	150 x 50 mm	(6" x 2")
DCT 5300 150 0075 3	150 x 75 mm	(6" x 3")
DCT 5300 150 0100 3	150 x 100 mm	(6" x 4")
DCT 4300 150 0150 3	150 x 150 mm	(6" x 6")

• Other Thicknesses are available upon request

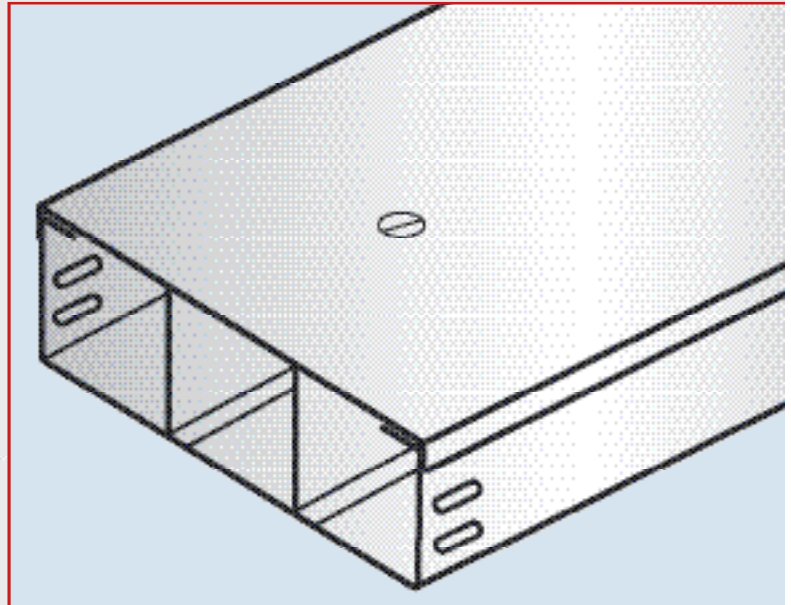


TRIPLE COMPARTMENT TRUNKINGS

Triple Compartment Cable Trunking
0.9 mm Thickness

TCT - 6200

Reference	Dimensions	
	MM	Inch
TCT 6200 050 0050 2	50 x 50 mm	(2" x 2")
TCT 6200 075 0050 2	75 x 50 mm	(3" x 2")
TCT 6200 075 0075 2	75 x 75 mm	(3" x 3")
TCT 6200 100 0050 2	100 x 50 mm	(4" x 2")
TCT 6200 100 0075 2	100 x 75 mm	(4" x 3")
TCT 6200 100 0100 2	100 x 100 mm	(4" x 4")
TCT 6200 150 0050 2	150 x 50 mm	(6" x 2")
TCT 6200 150 0075 2	150 x 75 mm	(6" x 3")
TCT 6200 150 0100 2	150 x 100 mm	(6" x 4")
TCT 6200 150 0150 2	150 x 150 mm	(6" x 6")



Triple Compartment Cable Trunking
1.2 mm Thickness

TCT 6300

Reference	Dimensions	
	MM	Inch
TCT 6300 050 0050 3	50 x 50 mm	(2" x 2")
TCT 6300 075 0050 3	75 x 50 mm	(3" x 2")
TCT 6300 075 0075 3	75 x 75 mm	(3" x 3")
TCT 6300 100 0050 3	100 x 50 mm	(4" x 2")
TCT 6300 100 0075 3	100 x 75 mm	(4" x 3")
TCT 6300 100 0100 3	100 x 100 mm	(4" x 4")
TCT 6300 150 0050 3	150 x 50 mm	(6" x 2")
TCT 6300 150 0075 3	150 x 75 mm	(6" x 3")
TCT 6300 150 0100 3	150 x 100 mm	(6" x 4")
TCT 6300 150 0150 3	150 x 150 mm	(6" x 6")

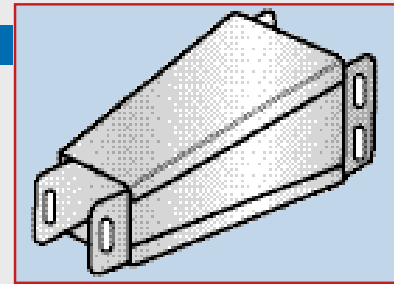
• Other Thicknesses are available upon request

TRUNKING ACCESSORIES

REDUCER/ Thickness: 0.9 mm - 1.2

AR 9010 - 9015

Reducers are usually manufactured to fit all available trunking sizes and required reduction.



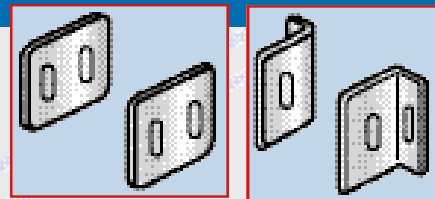
Reference		Dimensions
0.9 mm	1.2 mm	MM
AR 9010 075 0050 2	AR 9015 050 0050 3	75 x 75 mm - 50 x 50 mm
AR 9010 100 0050 2	AR 9015 075 0050 3	100 x 100 mm - 50 x 50 mm
AR 9010 100 0075 2	AR 9015 075 0075 3	100 x 100 mm - 75 x 75 mm
AR 9010 150 0050 2	AR 9015 100 0050 3	150 x 150 mm - 50 x 50 mm
AR 9010 150 0075 2	AR 9015 100 0075 3	150 x 150 mm - 75 x 75 mm
AR 9010 150 0100 2	AR 9015 100 0100 3	150 x 150 mm - 50 x 50 mm

• Other dimensions are available upon site and customer requirements.

STRAIGHT & FLANGED COUPLERS

ASC 9020

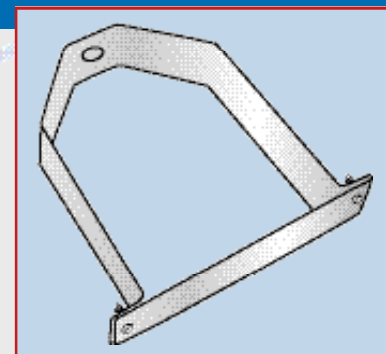
AFC 9025



HANGER

ASH 9030

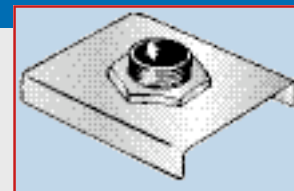
Reference		Dimensions
1.5 mm	2.0 mm	MM
ASH 9030 4	AR 9030 020 0020 5	2 x 2
ASH 9030 4	AR 9030 030 0020 5	3 x 2
ASH 9030 4	AR 9030 030 0030 5	3 x 3
ASH 9030 4	AR 9030 040 0020 5	4 x 2
ASH 9030 4	AR 9030 040 0030 5	4 x 3
ASH 9030 4	AR 9030 040 0040 5	4 x 4



SUSPENSION BRACKET

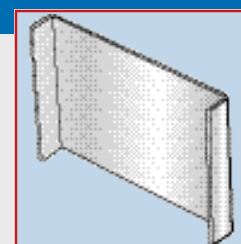
ASB 9035

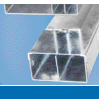
50 x 50 mm
75 x 75 mm
with brass & steel lock nuts



CABLE RETAINING STRAP

ACR 9040





ORDERING TRUNKINGS, FITTINGS & ACCESSORIES

When ordering cable trunkings, the full order no. will include the type of finish, width, side height, length and thickness, plus the item number and the number of compartments.

For instance: **CTGID410005000752/3000**

CT	: Cable Trunking	GI	: Pre Galvanized
D	: Double Compartments	4100	: Item Number
050	: Height	0075	: Width
2	: Sheet Thickness	3000	: Length

Examples:

1- Order number for pre galvanized 2400 mm triple compartment cable Trunking of 50 mm side height, 1.2mm sheet thickness and 100 mm width

Order number will be: **CT GI T 4100 0100 0050 3 2400**

2- Order number for Powder Coated 3000 mm Triple compartment cable Trunking of 75mm side height, 0.9mm sheet thickness and 150 mm width

Order number will be: **CT PC T 4100 075 0050 3 2400**

As for fittings and accessories, the order number will include all the above mentioned information plus the type of fitting or accessory to be added with a slash at the beginning of the code to be:

Example:

Order number for Top Lid Bend 90°, 50 mm side height, 1.2 mm sheet thickness and 100 mm width will be: **CT/TL90 GI T 4100 0050 0100 3**

ABBREVIATIONS

Materials

- Pre Galvanized : **GI**
- Hot-dip Galvanized : **HD**
- Black Steel : **BL**
- Powder Coated : **PC**
- Stainless Steel : **SS**

Compartments

- Single Compartment : **S**
- Double Compartment : **D**
- Triple Compartment : **T**

Thickness

- Sheet of 0.9 mm : **2**
- Sheet of 1.2 mm : **3**
- Sheet of 1.5 mm : **4**
- Sheet of 2.0 mm : **5**

SELECTING TRUNKING SIZE

To determine the required trunking size, multiply the number of each size of conductor by the factor appropriate to their size as given in Table A, sum the results for all conductors and select the trunking by comparing this sum with the maximum capacity units given in Table B.

This method is based on theoretical calculation and is useful as a general guide.

Other factors such as whether cables will cross or whether future changes will require the trunking to accept additional cabling must be taken into account.

Cable Size mm ²	Factor Copper or Aluminum
1.0	8.1
1.5	9.1
2.5	11.4
4.0	16.6
6.0	21.3
10.0	33.1
16.0	45.5
25.0	68.0
35.0	90.0
50.0	123.1
70.0	158.0
95.0	214.0

Table (A)

Trunking Size mm	Capacity Units
50 x 50	1080
75 x 50	1620
75 x 75	2450
100 x 50	2170
100 x 75	3280
100 x 100	4390
150 x 75	4900
150 x 100	6570
150 x 150	9910

Table (B)

MATERIAL & FINISHES

SFSP ensures that all of the materials used during the fabrication and finishing of its products conform to the relevant standards.

Basic Material

Mild steel classification ASTM A36 or BS 1449, part 1 or DIN EN 10111/10025/10029

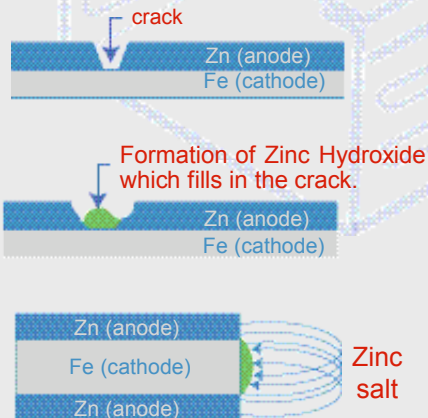
All parts made of steel can be delivered depending on environment and according to the various requirements with different protection method against corrosion, such as:

Austenitic Stainless steel sheets AISI 304 similar to material no. 1.4301 or BS 1449: part 2/304S15 or EN 10088

Excellent protection against chemical stress, marine and industrial air. It has also longer useful duration than hot - or pre - or electrolytic galvanized steel.

Pre galvanized steel sheets (mill galvanization) according to ASTM A653M G 90 or BS 2989 Z275 zinc coating 275 g/m² (36μ) on both sides (Sendzimir process Z 275) or BS EN 10142 1991.

Parts can be used in dry atmosphere without influence of aggressive particles. The cut edge of these sheets with a thickness of approx. up to 1.5 mm are by experience sufficiently protected by the cathode protection against corrosion in almost dry atmosphere.



Hot-dip galvanized steel sheets after fabrication according to ASTM A123 or BS729 or DIN 50976 or NFA91121/122 (coating thickness on each side $45 \div 50 \mu = 315 \div 350 \text{ g/m}^2$)

Appearance of the outer surface differs from bright shining to dark mat gray, which in all cases does not affect the zinc film / corrosion protection quality. Post fabricated components are immersed in a bath of molten zinc (450°C) after cleaning, pickling and rinsing. This relatively costly process is, however, necessary for installations in highly corrosive environments.

Parts galvanized like this not only have an extremely longer endurance compared to those made of mill-galvanized steel sheet - under the same atmospheric influences - but they are, also much better protected against low chemical stress, marine air or urban air.

As per standards the average local zinc film thickness shall be:

- 45 μ (315 g/m²) for sheets < 1mm
- 50 μ (350 g/m²) for sheets 1 to 3 mm

The average annual loss value of zinc coats under various atmospheric stresses are:

- Rural air 7 - 15 g/m² 0.8 - 1 μ/year
- Urban air 20 - 40 g/m² 3 - 7 μ/year
- Marine air 20 - 50 g/m² 3 - 8 μ/year
- Industrial air 40 - 80 g/m² 5 - 10 μ/year

• "White rust"

Either under a heterogeneous film of water, or under permanent condensation, white rust appears on the surface of the steel sheets. It is a precipitation of basic salts of zinc Zn(OH)₂ that combines with CO₂ to form a protective layer called Zinc Hydroxycarbonate.

White rust has no negative influence on the duration of the zinc protection.

Electrolytic galvanized steel

ASTM B633, BS 1706, BS 3382, part 2, DIN EN 10152/10131

Immersion of clean steel parts in a zinc salt solution and applying an electric current. Coating varies from few microns to 15 μ (100 to 175 gr/m²).

Attractive appearance when new, as the zinc coating is bright and smooth. Does not provide adequate corrosion resistance and will rarely provide more than 12 months protection in most of the coastal population centers.

Epoxy or Polyester coatings. Adhesion to ASTM D3359-83 on galvanized steel sheets.

Application: Exterior → Polyester,
Interior → Epoxy.

Offer good resistance to abrasions and blows, excellent durability and require little maintenance. Specify the RAL reference for the color.

RAL colors for Epoxy coating

RAL 1013 BEIGE	RAL 1003 YELLOW	RAL 3020 RED	RAL 8014 BROWN
RAL 9003 WHITE	RAL 7004 GREY	RAL 5015 BLUE	RAL 6005 GREEN